



MADE IN AMERICA



RioOutdoors.com



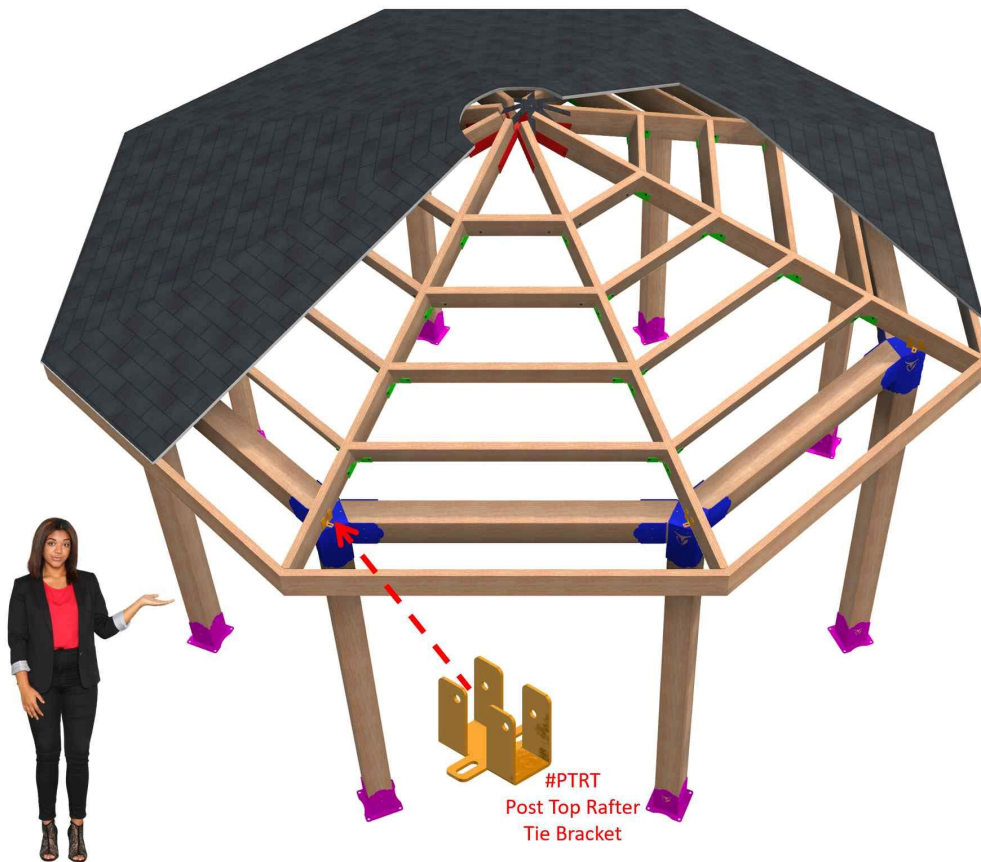
Installation Instructions

SKU# PTRT

Post Top Rafter Tie Bracket

WARNING: If the information in these instructions is not followed exactly, weakening or failure of the erected structure may result causing property damage, personal injury, or loss of life.

All brackets designed and sold by RioOutdoors.com are to be used for building pergolas only and are not to be used for other structure construction purposes.



- Thoughtfully engineered Brackets eliminate all wood-joinery skills requirements.
- Skills required: leveling ground, drilling pilot holes, and driving lag screws into lumber.
- Easy lift and place U-channels eliminate need for lifting equipment. Super-easy assembly work.
- Self-aligning design squares up structure automatically.
- Estimated Assembly Time is less than 2-1/2 hours (not including roof shingles).

A properly sized pilot hole must be drilled before you attempt to drive lag screws into any pergola lumber member. See Table, below. Driving lag screws into lumber, without first drilling a pilot hole, can prevent the lag screw from driving fully into the wood or can lead to crack formation while driving the lag screw in, or later, as the wood dries naturally. This can result in a weakened pergola structure.

Proper pilot hole diameter and hole depth for various lag screws and wood types

Lag Screw Type	Wood Type	Pilot hole drill diameter and hole depth
1/4" X 1-1/4" Lag Screw McMasterCarr.com SKU 92351A546	Soft Wood	3/32" drill bit diam., 1-1/4" depth
	Hard Wood	3/16" drill bit diam., 1-1/4" depth

Table of Contents

1 GENERAL INFORMATION.....	3		
1.1 SAFETY AND WARNING INFORMATION	3		
1.1.1 Building Permit & Inspection Requirements	3		
1.1.2 Other Cautions	3		
1.2 TOOLS REQUIRED	4		
1.3 CONTENTS OF KIT # OR	5		
1.4 ROOF STRUCTURE ASSEMBLY WORK .. ERROR! BOOKMARK			
NOT DEFINED.			
		1.4.1 Post Top Rafter Tie Brackets Installation	6
		1.4.2 Installing the Starter Rafters Assembly	8
2 WARRANTY POLICY STATEMENT	10		
2.1 CONDITIONS.....	10		
2.2 EXCLUSIONS	10		
2.3 LIMITATIONS OF LIABILITY	11		
2.4 HOW TO OBTAIN WARRANTY SERVICE	11		

1 GENERAL INFORMATION

1.1 SAFETY AND WARNING INFORMATION

1.1.1 Building Permit & Inspection Requirements

We recommend that you consult with your local building permit office and obtain advice and any required building permits and inspection approvals from the local building inspection department or the having authority over building codes.

1.1.2 Other Cautions

CAUTION: Adhere to all safety requirements. Wear safety glasses/goggles when working. Wear safety gloves when handling brackets, hardware, and lumber. Wear hearing protection when using a circular saw, miter saw, table saw, or hammer drill.

INSTALLER: Leave this manual with the consumer. **CONSUMER:** Retain this manual for future reference.




1.2 TOOLS REQUIRED

Listed below, are common tools required for pergola projects. These tools are not included in this kit. Your pergola project may not require all tools. Select and acquire the tools for your project from the “Required for” column in this table.

Description	Tool Purpose	Required for	Reference Image
Tape Measure	Measure and verify lengths.	All pergola types	
Framing Level	Verify Level/Plumb	All pergola types	
Drill Gun	Drill pilot holes for lag screws.	All pergola types	
Ratchet Socket Driver	Drive lag screws into Pergola lumber members.	All pergola types	
7/16" Hex Socket	Drive 1/4" X 1-1/4" Hex Hd. lag screws.	All pergola types	
3/32" Drill Bit	Drill pilot holes for 1/4" lag screws in soft wood.	All pergola types	
Circular Saw & Miter Saw	Cut headers to length; cut rafters to length; cut roof deck boards.	All pergola types	
Hammer	Various.	All pergola types.	
Chalk Snapline	Mark boards cut lines	Solid roof pergola	

1.3 CONTENTS OF KIT # OR

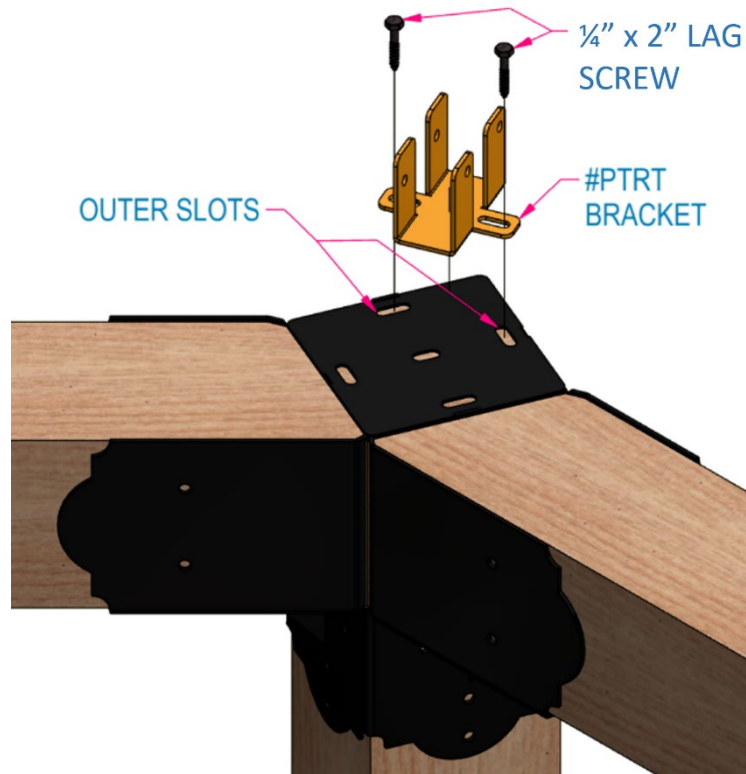
The contents of this kit are shown in the table, below. Before you begin your project, take an inventory of all items that you received from us. If any items are missing, contact us directly via email at info@RioOutdoors.com. Include your name and shipping address and your order number, if available. We will respond within 24 hours with a resolution to your problem.

Item SKU #, Description	Item Qty	Item Image
<p style="text-align: center;">Post Top Rafter Tie Bracket SKU# PTRT</p> <p>(The hardware required to mount each bracket are bulk packaged)</p>	8	
<p style="text-align: center;">¼ x 1-1/4" Lag Screw</p> <p>(This Qty shows the total of this item included)</p>	4	
<p style="text-align: center;">¼" x 2" Lag Screw</p>	2	

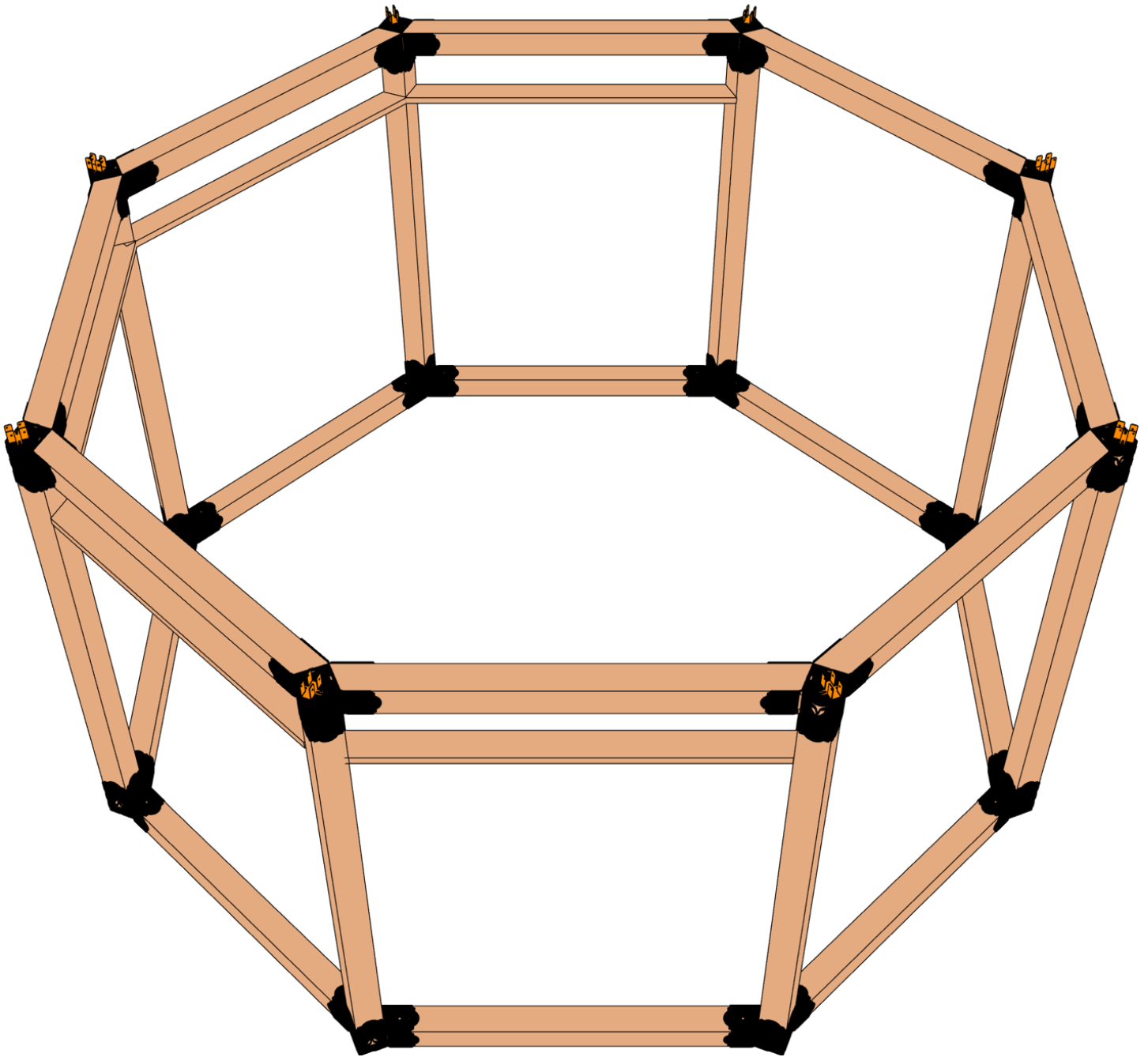
1.4 POST TOP RAFTER TIE BRACKETS INSTALLATION

This bracket is designed to be mounted on top of each corner post to secure one rafter each. Two (2) $\frac{1}{4}$ " x 2" Lag Screw are required to secure each #PTRT bracket to each post top. The lag screws are included with this bracket.

1. Identify two outer slots located on the post top octagon elbow bracket's top surface.
2. Position one post top rafter tie bracket as shown, below, and centered with the outer corner.
3. Use a Sharpie Marker to mark the location of the screws on the post top surface through the open slots.
4. At the screw location, predrill $\frac{3}{32}$ " x 2" pilot holes.
5. Secure the post top rafter tie bracket to the post top using two (2) $\frac{1}{4}$ " x 2" lag screws.



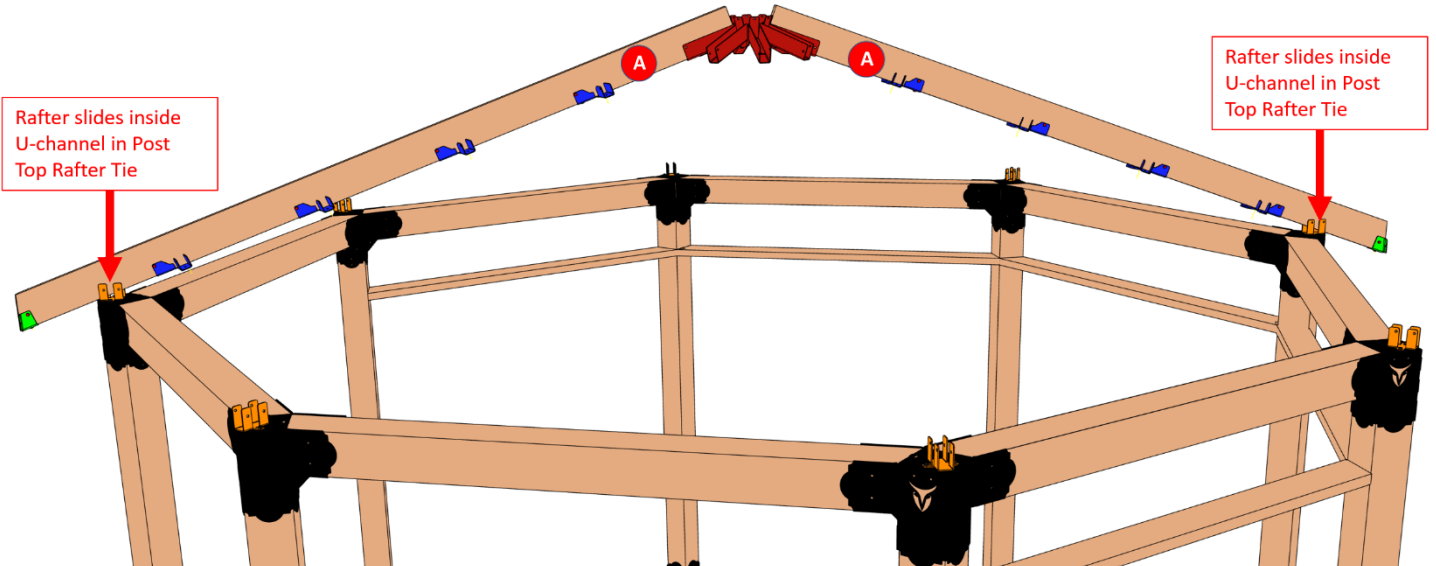
6. Repeat these steps and add one post top rafter tie bracket to all post tops.



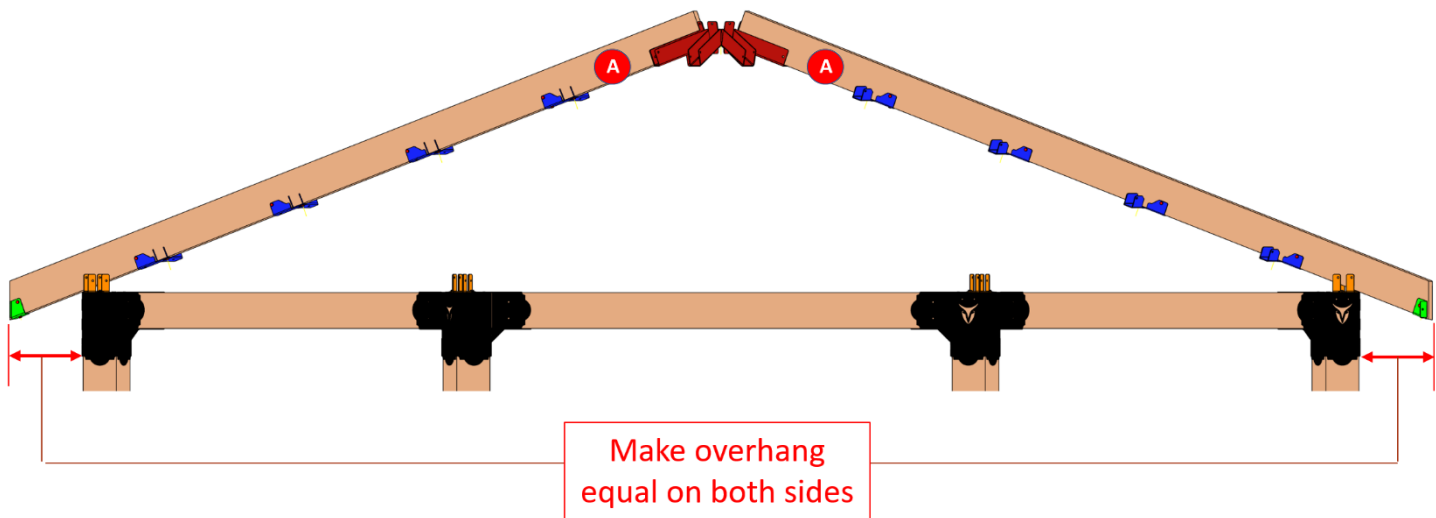
1.4.1 Installing the Starter Rafters Assembly

Two people are needed to lift the Starter Rafters Assembly and place it inside two opposing post top rafter tie brackets. It does not matter which opposing corners you start at.

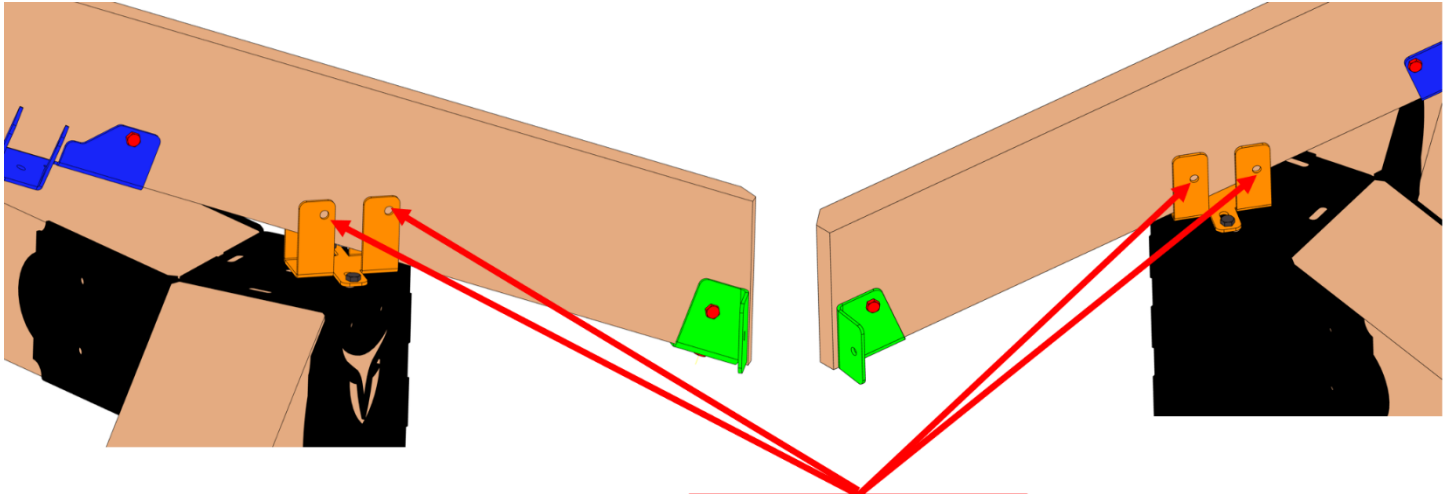
1. The Starter Rafters Assembly will be very stiff and solid. Lift the Starter Rafters Assembly and place the rafters inside the open U-channels in the post top rafter ties.



2. Measure the overhang on both sides. Center the Starter Rafters Assembly between the two corners by sliding it until the overhang is equal on both sides.



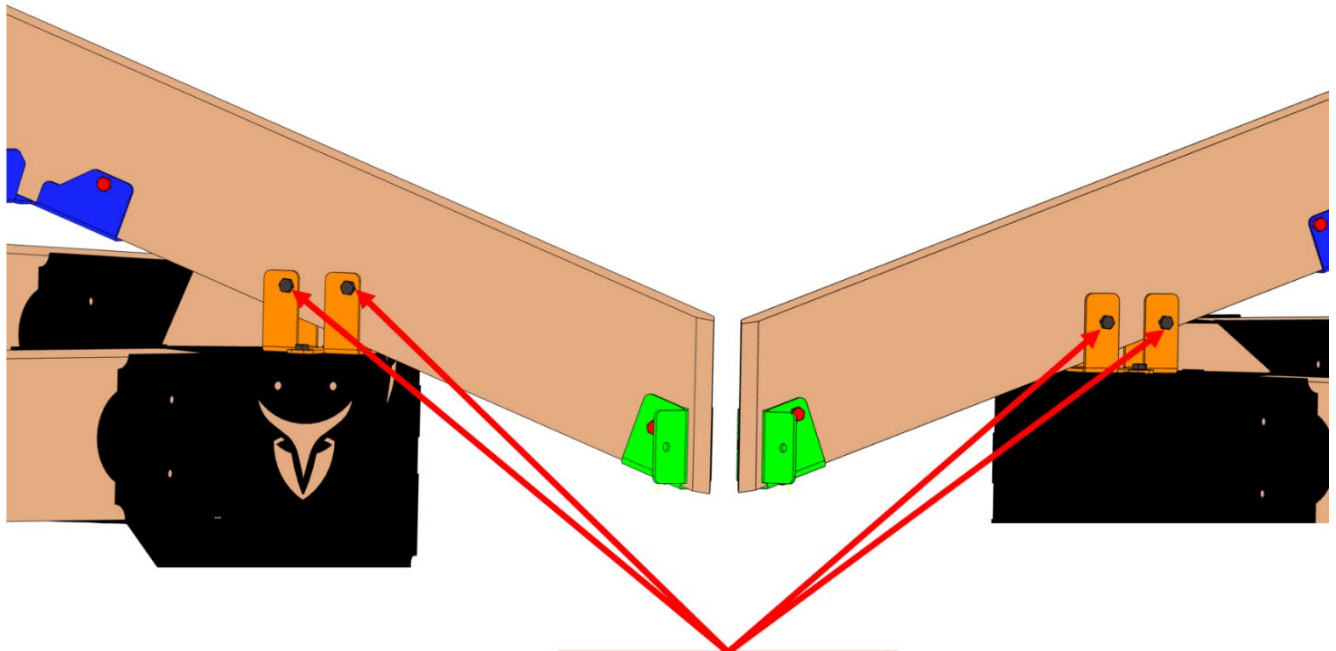
3. There are four screw holes in the PTRT bracket which are to be used to drive 1/4" x 1-1/4" Lag Screws through. Drill 3/32"



Drill 3/32" x 1-1/4" pilot hole at center of four holes in post top rafter ties.

x 1-1/4" pilot holes at the center of these four holes (2 holes on each side of the rafter).

4. Drive two lag screws into the pilot holes on each side of the rafter. Tighten the lag screws.



Drive 1/4" x 1-1/4" lag screw into pilot holes. Tighten the lag screws.

2 WARRANTY POLICY STATEMENT

RioOutdoors.com, extends this 1-Year Warranty to the original purchaser, automatically upon purchase from RioOutdoors.com. The items covered by this warranty and the period of such coverage is set forth in the table below.

Some conditions apply (see below).

The policy is not transferable, amendable, or negotiable under any circumstances.

Part	2 years	Labor Coverage
Welded Steel Brackets	✓	Not Included
Painted Finishes	✓	Not Included
All hardware	✓	Not Included

2.1 CONDITIONS

Warranty protects against defect in manufacture only, unless herein specified otherwise.

Any part(s) found to be defective during the warranty period as outlined above will be repaired or replaced at RioOutdoors.com's option provided that the defective part is returned, if requested by RioOutdoors.com. Alternatively, RioOutdoors.com may at its own discretion fully discharge all its obligations under the warranty by refunding the verified purchase price of the product to the original purchaser.

RioOutdoors.com is not responsible for results or costs of workmanship of installers in the negligence of their construction work.

At all times RioOutdoors.com reserves the right to inspect reported complaints on location in the field claimed to be defective prior to processing or authorizing of any claim. Failure to allow this upon request will void the warranty.

All claims must be complete and provide full details as requested by RioOutdoors.com to receive consideration for evaluation. Incomplete claims may be rejected.

All pergola brackets must be installed according to all manufacturers' instructions as per the installation instruction manual by a RioOutdoors.com.

All Local and National required codes must be met.

Repair/replacement parts purchased by the consumer from RioOutdoors.com after the original coverage has expired will carry a 90-day warranty, valid with a receipt only. Any item shown to be defective will be repaired or replaced at our discretion. No labor coverage is included with these parts.

2.2 EXCLUSIONS

This 1-Year Warranty does not extend to paint, rust, or corrosion of any kind due to corrosive chemicals (i.e., chlorine, salt, air, etc.), physical damage to painted surfaces during installation or later.

Malfunction, damage, or performance-based issues of all components as a result of environmental conditions, location, chemical damages, downdrafts, installation error, installation by an unqualified installer, abuse, misuse, use of improper tools, acts of God, weather related problems from hurricanes, tornados, earthquakes, floods, lightning strikes/bolts or acts of terrorism or war, which result in damage are not covered under the terms of this 1-Year Warranty.

RioOutdoors.com has no obligation to enhance or modify any part once manufactured (i.e., as products evolve, field modifications or upgrades will not be performed on existing pergolas).

Any parts showing signs of abuse or misuse will not be covered under the terms of this warranty policy and may void this warranty. This includes parts with rusted or corroded surface or welds which have not been reported as rusted or corroded within three (3) months of installation/purchase.

Parts which show evidence of being used while damaged, or with problems known to the purchaser and causing further damages will void this warranty.

Parts where the RioOutdoors.com logo has been altered, deleted, removed, or made illegible will void this warranty.

Minor movement, expansion and contraction of the steel parts is normal and is not covered under the terms of this warranty.

Freight damages for parts are not covered under the terms of the warranty.

Products made or provided by other manufacturers and used in conjunction with the RioOutdoors.com parts without prior authorization from RioOutdoors.com may void this warranty.

2.3 LIMITATIONS OF LIABILITY

The original purchaser's exclusive remedy under this warranty, and RioOutdoors.com's sole obligation under this warranty, express or implied, in contract or in tort, shall be limited to replacement, repair, or refund, as outlined above. IN NO EVENT WILL RioOutdoors.com BE LIABLE UNDER THIS WARRANTY FOR ANY INCIDENTAL OR CONSEQUENTIAL COMMERCIAL DAMAGES OR DAMAGES TO PROPERTY. TO THE EXTENT PERMITTED BY APPLICABLE LAW, RioOutdoors.com MAKES NO EXPRESS WARRANTIES OTHER THAN THE WARRANTY SPECIFIED HEREIN. THE DURATION OF ANY IMPLIED WARRANTY IS LIMITED TO DURATION OF THE EXPRESSED WARRANTY SPECIFIED ABOVE. IF IMPLIED WARRANTIES CANNOT BE DISCLAIMED, THEN SUCH WARRANTIES ARE LIMITED IN DURATION TO THE DURATION OF THIS WARRANTY.

Some U.S. states do not allow limitations on how long an implied warranty lasts or allow exclusion or limitation of incidental or consequential damages, so the above limitations or exclusions may not apply to you.

Customers located outside the U.S. should consult their local, provincial, or national legal codes for additional terms which may be applicable to this warranty.

2.4 HOW TO OBTAIN WARRANTY SERVICE

Customers should contact RioOutdoors.com by email at info@RioOutdoors.com . Please include a brief description of the problem and your address, email, and telephone contact information. A representative will contact you to make arrangements for warranty service.

Warrantor:

RioOutdoors.com
United States

Thank you for choosing RioOutdoors.com.

